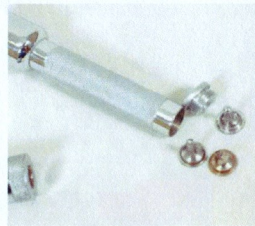
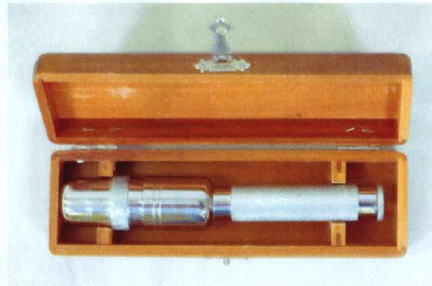




To:

MEMBERSHIP INFORMATION  
ENCLOSED!

## Artifact of the Month- Probe



Medical probes like this one are fitted with a magnet that holds the interchangeable tips on the probe and magnetizes the entire probe. This instrument could have been used during the production era by site medical employees to remove metal fragments from an open wound with minimal extra cutting. (The metal bits are attracted to the magnetic probe).

This procedure is often used for irradiated wounds containing foreign, metal objects. It's important to ensure that everything is removed so there's no source of radiation left in the body to further damage the tissue.

Site medical was equipped to address the special needs of irradiated patients in a variety of ways. The SRS Cold War Artifact Collection contains a variety of these implements. It is a testament to the site safety program that these items were very rarely used.

## SRS HERITAGE

SRS Heritage Foundation Newsletter



Winter 2007

### The President's Corner

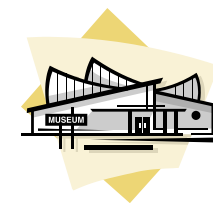
#### SEASON'S GREETINGS

As we approach the beginning of the new year, 2008, I am amazed to find that I have been President of your Board of Directors for almost two years. It doesn't seem that long ago that we were starting the SRS Heritage Foundation with no money and very little organization. In fact, all we had going for us was a vision of the future and boundless enthusiasm.

The two years have brought us closer to the vision as you can see from reading the Newsletter. We have a preliminary design for the Heritage Center, we are moving toward finalizing plans for the Ellenton Heritage Trail and the video commemorating Ellenton and the other displaced communities is approaching completion.

We are grateful for your backing of Foundation endeavors and are counting on your continuing support as we continue to preserve and present the heritage of the Savannah River Site.

By Bill Mottel, President



#### TIME TO RENEW!

With the New Year comes the time to renew our memberships in organizations we support. Your membership in the SRS Heritage Foundation is particularly important as we begin to seek funding for the SRS Heritage Center and other projects. Potential donors ask about public support for our projects and membership is one measure of this support.

Please renew your membership now (or join if you are not already a member). The cost is minimal and the Foundation needs you.

*[If you did not receive a membership form in this mailing your membership is good until December 2008]*

#### WHAT'S INSIDE:

Unveiling	2-5
Sponsors	6
Event Photos	6
Ellenton Trail	7
SRS Fifty Book	7
Preservation Project	7
Artifact	8





**Plans** for the SRS Heritage Center were unveiled at a Wine and Cheese Celebration on September 26, 2007. Approximately 120 enthusiastic supporters joined in the festivities held in the Aiken Municipal Building. Photos of the reception are included on page 6.

The preliminary design of the Heritage Center was completed by a team including John Starr, Joshua Gassman and Joie Maddox of Lord, Aeck and Sargent, architects of Atlanta. LAS specializes in museum planning; their clients include the Georgia State Capital Museum, the High Museum of Art and the Little White House Museum.

Andrea Roller of Van Sickle and Roller has designed exhibits for the Gerald R. Ford Presidential Museum, the Computer History Museum and the Blue Ridge Parkway Destination Center.

Funding for preliminary design was provided by a contribution from Washington Group International Inc. and a grant from the South Carolina National Heritage Corridor.

The artist's rendering of the SRS Heritage Center was unveiled by Jean Schwier of DOE-SR, Leo Sain of WSRC, Joahua Gassman of Lord, Aeck and Sargent, Andrea Roller of Van Sickle and Roller and Whitney Ellis of the South Carolina National Heritage Corridor.



**IWERT LEADS TEAM FOR ELLENTON TRAIL**

Jim Iwert has assumed responsibility for implementing the Ellenton trail project. Jim is a civil engineer with construction experience in the DuPont Engineering Department and private industry. He worked at SRS in both SRNL and the Investment Group and retired in 2005.

Jim has been working with the US Forest Service and the Archaeological Research Project at SRS to develop plans for the Heritage Trail. Initial efforts are aimed at providing guided tours of the site of the former town of Ellenton at specified times and dates.

A team, including former residents of the displace community, has been formed to identify specific buildings and activities that typified life in rural South Carolina before the coming of the Site. Team members include Gayle Bumgarner, Clarence Bush, Tiajuana Cochnauer, Betty Greene, Dennis Ryan, Paul Sauerborn, Buddy Wingard, and Joanne Zobel. The team is meeting regularly to prepare a proposal to DOE for implementation of the walking trail.

**PUBLISHER REVIEWS PLANS FOR SRS AT FIFTY BOOK**

Bernie Walton, Project Director for the Donning Company, Publishers, met with the Publications Committee on October 20th to review plans for republishing the book, SRS at Fifty. Permission to republish the book has been granted to the Heritage Foundation by the DOE Legal Department.

Bernie agreed to work with John Strack of the Publication Committee to provide a cost for reprinting the book. He suggested that republication will be expensive and should not be considered as a means of raising funds for the Foundation. He advised that publication of one or more smaller volumes containing pictures and a limited text extracted from the book could be an effective fund-raising project.

The Committee will evaluate these recommendations and continue to investigate publication alternatives.

**HANFORD PRESERVATION PROJECTS MOVING FORWARD**

Savannah River is not the only DOE site actively engaged in historic preservation and interpretation. In fact, we are playing catch up. Eleven of the 15 DOE sites already have a museum or visitor center. Only Fernald, Mound, Rocky Flats and SRS currently lack operating museums or visitor Centers.

Hanford, which has had a museum since 1962, is raising funds for a new \$40.5 million interpretive center to replace the exiting facility. Also, work is about to begin on replacing the roof on Hanford's B Reactor. The reactor is open for public tours and is being considered for designation as a National Historic Landmark.





**SRS HERITAGE  
FOUNDATION  
SPONSORS  
THANK YOU!**

The SRS Heritage Foundation is a relatively new organization but, thanks to our strong base of supporters, we are growing steadily. We are particularly pleased that several organizations have such faith in our future that they have made substantial financial contributions to get our programs started. Among these supporters are:

**Sponsors**

- Washington Group International
- Southeastern Environmental Management Association (SEMA)
- Fluor Daniel Government Group

**Corporate Members**

- Energy Solutions
- Security Federal Bank
- Washington Group International

**Small Business Member**

- New South Associates
- Thank you to the individual members for supporting the Foundation

**WINE AND CHEESE EVENT PHOTOS**



Preparing for the unveiling. Leo Sain (Standing), Jean Schwier, Andrea Roller, Joshua Gassman and Whitney Ellis



Crowd after the unveiling....Walt being interviewed by Channel 12 News in the background. There's Charlie & Lyddie Hansen, Ron Schroder, Rick Ford and others.



Heritage Foundation membership table staffed by Caroline Bradford and Linda Perry. Mr. & Mrs. Jack Roberts talking with Gwen Johnson, Foundation Board member. David Jameson in background.

**PLANS UNVEILED**



The design adapts the 22,000 square foot brick office building into a modern education center including permanent exhibits, classrooms and temporary exhibit space that will feature accomplishments of the Savannah River National Laboratory. Entrance to the exhibits will be through a simulated guard post that will recreate the 1950's badging procedure. Visitors will also be invited to attend a security briefing with a black and white film about the Cold War Soviet threat and the need for strict adherence to security measures.

The permanent exhibits will include an SRS Time Line displayed on an I-wall to facilitate visitor interaction. The people and communities section will include oral and video-taped recollections of the former residents who were displaced to make room for the Savannah River Plant and also memories of employees of early days at the Site.

Several hands-on exhibits will be included in the process and products section. These exhibits will include remote handling manipulators and the reassembled control room from an early test reactor. The section on the site environment will describe environmental monitoring programs that led to the emerging science of ecology. Exiting from the exhibit area will be through a hallway devoted to the atomic culture of the 1950's. Some of these features are illustrated on pages 4 and 5.





Guard House: Stop! Security! Get cleared by security and receive your identification badge prior to passing through the gates.

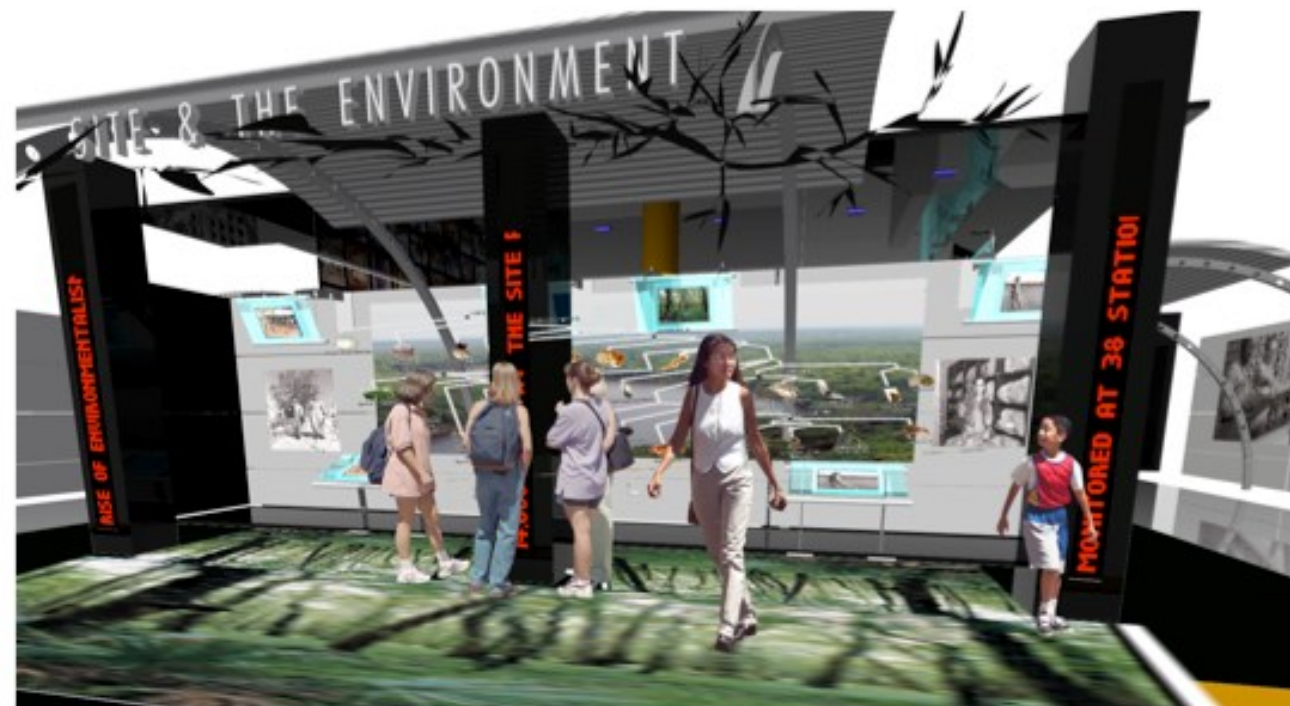
Entrance to exhibit area through simulated guard post will introduce visitors to the security procedures of the 1950s.



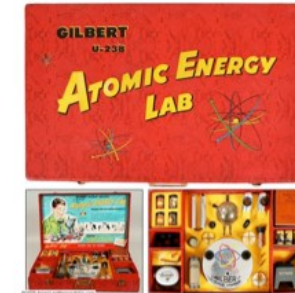
Security checkpoints controlled traffic at the plant's perimeter.



The site and the Environment exhibit will describe the evolution of monitoring and ecological studies of the site



People and their communities exhibit includes oral histories of people displaced when the Site came to rural South Carolina and workers who built and operated the Site.



Visitors exit the main gallery through exhibits of atomic pop culture. Atomic-themed memorabilia show diverse influences of nuclear science.



The Operations Gallery focuses on processes, products and workers. Visitors will be able to interact with exhibits as they learn about radiation protection, remote handling, running a reactor, creating isotopes, and other aspects of the Site.

